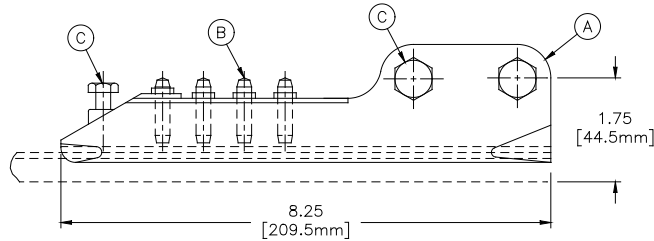


023161-3006

300 KCMIL TCH Tip



* Dimensions are for reference only.

Weight

1.25 lbs.

Used Materials

Item #	Part	Material
A	Body	Bronze
B	Wire Holding Pins	Stainless Steel
C	Bolts, Nuts, & Washer	Steel, Hot Dip Galvanized

Tip Information

Type	Details
Ultimate Load	>14,480 lbs. based on the breaking strength of 300 KCMIL alloy 80 trolley wire
Hydraulic Crimping Tool	Use Burndy Y35 Series, or equal
Die Set	IMPulse NC P/N 054781-3001

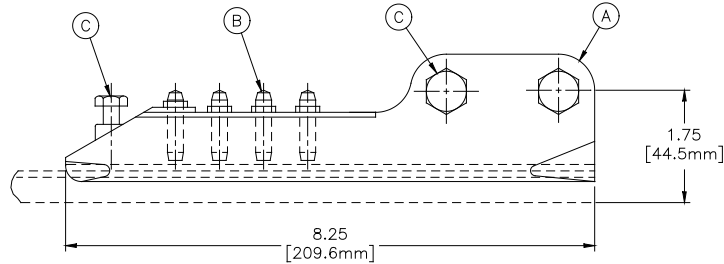
Photograph of the 300 KCMIL TCH Tip



THIS DOCUMENT CONTAINS PROPRIETARY AND CONFIDENTIAL DATA OF IMPULSE NC, INC. NO DISCLOSURE, REPRODUCTION OR ANY USE OF ANY PART THEREOF SHALL BE MADE WITHOUT WRITTEN PERMISSION OF IMPULSE NC, INC.

Tip Options

022501-2000 | **350 MCM TCH Tip**



* Dimensions are for reference only.

Weight
1.25 lbs.

Used Materials		
Item #	Part	Material
A	Body	Bronze
B	Wire Holding Pins	Stainless Steel
C	Bolts, Nuts, & Washer	Steel, Hot Dip Galvanized

Tip Information	
Type	Details
Ultimate Load	>16,410 lbs. based on the breaking strength of 350 KCML alloy 80 trolley wire
Hydraulic Crimping Tool	Use Burndy Y35 Series, or equal
Die Set	IMPulse NC P/N 054781-3001

Photograph of the 350 MCM TCH Tip

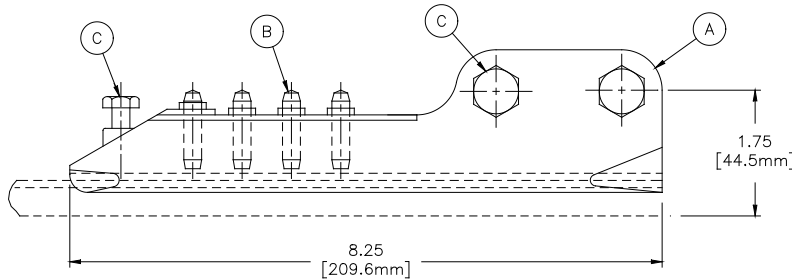


THIS DOCUMENT CONTAINS PROPRIETARY AND CONFIDENTIAL DATA OF IMPULSE NC, INC. NO DISCLOSURE, REPRODUCTION OR ANY USE OF ANY PART THEREOF SHALL BE MADE WITHOUT WRITTEN PERMISSION OF IMPULSE NC, INC.

Tip Options

022502-2000

4/0 TCH Tip



* Dimensions are for reference only.

Weight
1.25 lbs.

Used Materials		
Item #	Part	Material
A	Body	Bronze
B	Wire Holding Pins	Stainless Steel
C	Bolts, Nuts, & Washer	Steel, Hot Dip Galvanized

Tip Information	
Type	Details
Ultimate Load	>11,490 lbs. based on the breaking strength of 4/0 KCML alloy 80 trolley wire
Hydraulic Crimping Tool	Burndy Y35 Series, or equal
Die Set	IMPulse NC P/N 054781-3001

Photograph of the 4/0 TCH Tip

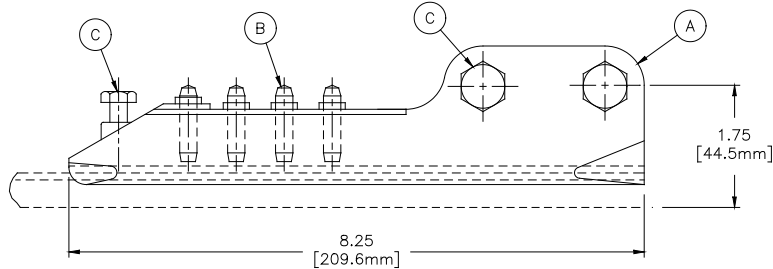


THIS DOCUMENT CONTAINS PROPRIETARY AND CONFIDENTIAL DATA OF IMPULSE NC, INC. NO DISCLOSURE, REPRODUCTION OR ANY USE OF ANY PART THEREOF SHALL BE MADE WITHOUT WRITTEN PERMISSION OF IMPULSE NC, INC.

Tip Options

022503-2000

336,400 TCH Tip



* Dimensions are for reference only.

Weight
1.25 lbs.

Used Materials		
Item #	Part	Material
A	Body	Bronze
B	Wire Holding Pins	Stainless Steel
C	Bolts, Nuts, & Washer	Steel, Hot Dip Galvanized

Tip Information	
Type	Details
Ultimate Load	>15,010 lbs. based on the breaking strength of 336,400 KCML Alloy 80 Trolley Wire
Hydraulic Crimping Tool	Use Burndy Y35 Series
Die Set	IMPulse NC P/N 054781-3001
Fits	336,400 Figure 9 Deep-Section Grooved Trolley Wire

Photograph of the 336,400 TCH Tip

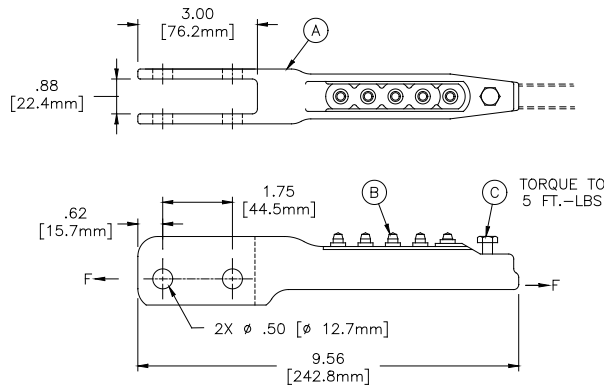


THIS DOCUMENT CONTAINS PROPRIETARY AND CONFIDENTIAL DATA OF IMPULSE NC, INC. NO DISCLOSURE, REPRODUCTION OR ANY USE OF ANY PART THEREOF SHALL BE MADE WITHOUT WRITTEN PERMISSION OF IMPULSE NC, INC.

Tip Options

055895-3006

Section Insulator Tip



* Dimensions are for reference only.

Weight

2.50 lbs.

Used Materials

Item #	Part	Material
A	Body	Bronze
B	Pins	Stainless Steel
C	Bolt	Steel, Hot Dip Galvanized

Tip Information

Type	Details
Ultimate Load	>14,480 lbs. based on the breaking strength of 300 KCMIL alloy 80 trolley wire
Hydraulic Crimping Tool	Use Burndy Y35 Series, or equal
Die Set	IMPulse NC P/N 054781-3001

Photograph of the Section Insulator Tip

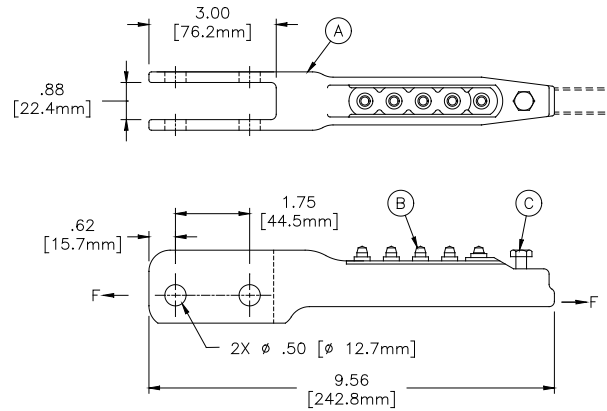


THIS DOCUMENT CONTAINS PROPRIETARY AND CONFIDENTIAL DATA OF IMPULSE NC, INC. NO DISCLOSURE, REPRODUCTION OR ANY USE OF ANY PART THEREOF SHALL BE MADE WITHOUT WRITTEN PERMISSION OF IMPULSE NC, INC.

Tip Options

055895-3007

Section Insulator Tip



* Dimensions are for reference only.

Weight

2.50 lbs.

Used Materials

Item #	Part	Material
A	Body	Bronze
B	Pins	Stainless Steel
C	Bolts	Stainless Steel

Tip Information

Type	Details
Ultimate Load	>16,410 lbs. based on the breaking strength of 350 KCML alloy 80 trolley wire
Hydraulic Crimping Tool	Burndy Y35 Series, or equal
Die Set	IMPulse NC P/N 054781-3001

Photograph of the Section Insulator Tip

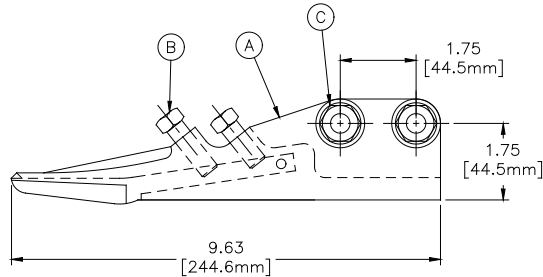


THIS DOCUMENT CONTAINS PROPRIETARY AND CONFIDENTIAL DATA OF IMPULSE NC, INC. NO DISCLOSURE, REPRODUCTION OR ANY USE OF ANY PART THEREOF SHALL BE MADE WITHOUT WRITTEN PERMISSION OF IMPULSE NC, INC.

Tip Options

019347-2000

2/0 Type TCR Tip



* Dimensions are for reference only.

Weight

2.15 lbs.

Used Materials

Item #	Part	Material
A	Body	Bronze
B	Set Screw	Steel, Zip Plated Dichromate Dip
C	Bolt, Nut and Lockwasher	Steel, Hot Dip Galvanized

Tip Information

Type	Details
Trolley Wire Size	2/0 AWG Round or Grooved
Ultimate Load	>7,473 lbs. based on the breaking strength of 2/0 AWG alloy 80 trolley wire

Photograph of the 2/0 Type TCR Tip

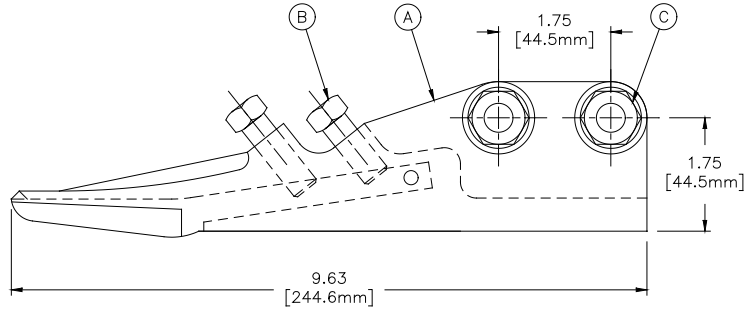


THIS DOCUMENT CONTAINS PROPRIETARY AND CONFIDENTIAL DATA OF IMPULSE NC, INC. NO DISCLOSURE, REPRODUCTION OR ANY USE OF ANY PART THEREOF SHALL BE MADE WITHOUT WRITTEN PERMISSION OF IMPULSE NC, INC.

Tip Options

017800-2000

4/0 Type TCR Tip



* Dimensions are for reference only.

Weight

2.15 lbs.

Used Materials

Item #	Part	Material
A	Body	Bronze
B	Set Screw	Steel, Zip Plated Dichromate Dip
C	Bolt, Nut and Lockwasher	Steel, Hot Dip Galvanized

Tip Information

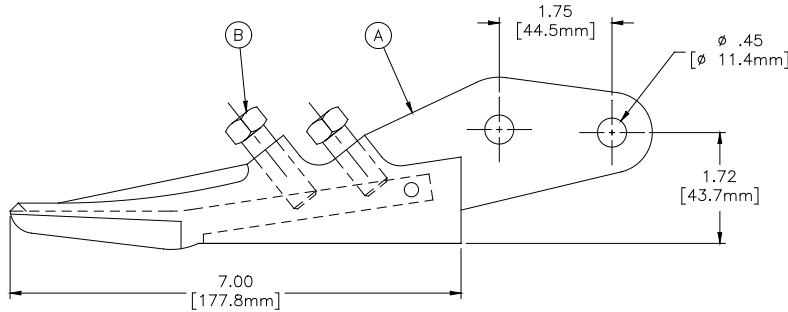
Type	Details
Trolley Wire Size	4/0 AWG Round or Grooved
Ultimate Load	>10,820 lbs. based on the breaking strength of 4/0 AWG alloy 80 trolley wire

THIS DOCUMENT CONTAINS PROPRIETARY AND CONFIDENTIAL DATA OF IMPULSE NC, INC. NO DISCLOSURE, REPRODUCTION OR ANY USE OF ANY PART THEREOF SHALL BE MADE WITHOUT WRITTEN PERMISSION OF IMPULSE NC, INC.

Tip Options

019345-2000

2/0 Type TR Tip



* Dimensions are for reference only.

Weight

1.65 lbs.

Used Materials

Item #	Part	Material
A	Body	Bronze
B	Set Screw	Steel, Zip Plated Dichromate Dip

Tip Information

Type	Details
Trolley Wire Size	2/0 AWG Round or Grooved
Ultimate Load	>7,473 lbs. based on the breaking strength of 2/0 AWG alloy 80 trolley wire

Photograph of the 2/0 Type TR Tip

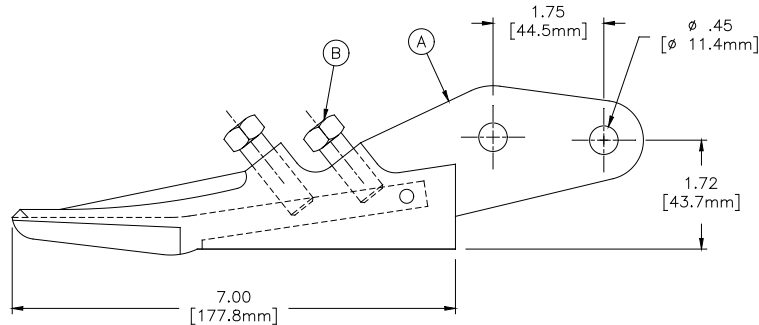


THIS DOCUMENT CONTAINS PROPRIETARY AND CONFIDENTIAL DATA OF IMPULSE NC, INC. NO DISCLOSURE, REPRODUCTION OR ANY USE OF ANY PART THEREOF SHALL BE MADE WITHOUT WRITTEN PERMISSION OF IMPULSE NC, INC.

Tip Options

018211-2000

4/0 Type TR Tip



* Dimensions are for reference only.

Weight
1.65 lbs.

Used Materials		
Item #	Part	Material
A	Body	Bronze
B	Set Screw	Steel, Zip Plated Dichromate Dip

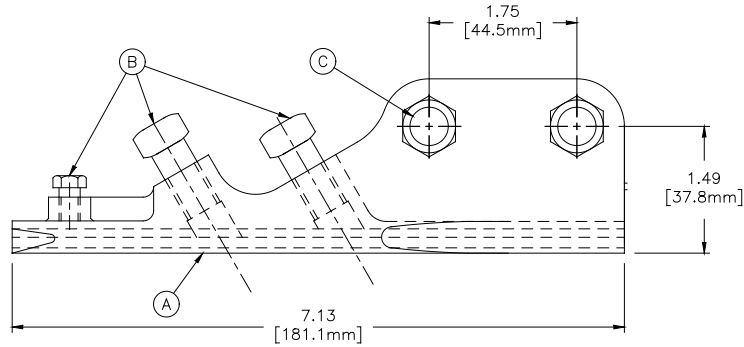
Tip Information	
Type	Details
Trolley Wire Size	4/0 Round or Grooved
Ultimate Load	>10,820 lbs. based on the breaking strength of 4/0 AWG alloy 80 trolley wire

THIS DOCUMENT CONTAINS PROPRIETARY AND CONFIDENTIAL DATA OF IMPULSE NC, INC. NO DISCLOSURE, REPRODUCTION OR ANY USE OF ANY PART THEREOF SHALL BE MADE WITHOUT WRITTEN PERMISSION OF IMPULSE NC, INC.

Tip Options

017795-2000

2/0 Type TC Tip



* Dimensions are for reference only.

Weight
1.31 lbs.

Used Materials		
Item #	Part	Material
A	Clamp Body	Bronze
B	Wire Holding Screw	Steel, Zinc Plated with Dichromate Dip
C	Bolts, Nuts, and Washers	Stainless Steel

Tip Information	
Type	Details
Trolley Wire Size	2/0 Round or Grooved
Ultimate Load	>7,473 lbs. based on the breaking strength of 2/0 AWG alloy 80 trolley wire

Photograph of the 2/0 Type TC Tip

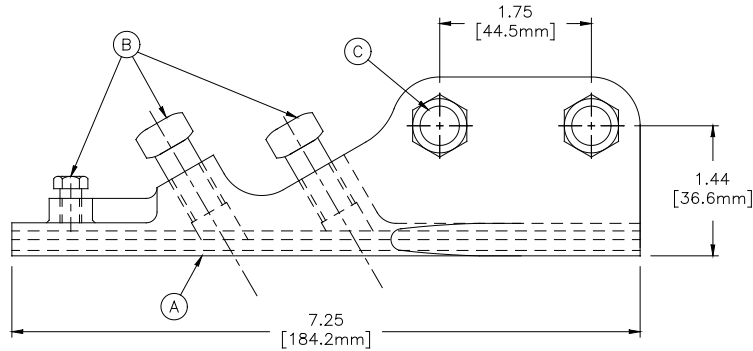


THIS DOCUMENT CONTAINS PROPRIETARY AND CONFIDENTIAL DATA OF IMPULSE NC, INC. NO DISCLOSURE, REPRODUCTION OR ANY USE OF ANY PART THEREOF SHALL BE MADE WITHOUT WRITTEN PERMISSION OF IMPULSE NC, INC.

Tip Options

017797-2000

4/0 Type TC Tip



* Dimensions are for reference only.

Weight
1.31 lbs.

Used Materials		
Item #	Part	Material
A	Clamp Body	Bronze
B	Wire Holding Screw	Steel, Zinc Plated with Dichromate Dip
C	Bolts, Nuts, and Washers	Stainless Steel

Tip Information	
Type	Details
Trolley Wire Size	4/0 Round or Grooved
Ultimate Load	>10,820 lbs. based on the breaking strength of 4/0 AWG alloy 80 trolley wire

Photograph of the 4/0 Type TC Tip

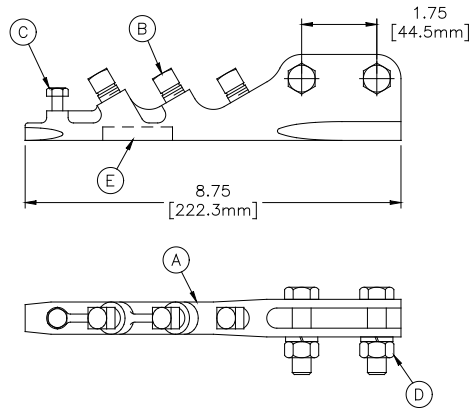


THIS DOCUMENT CONTAINS PROPRIETARY AND CONFIDENTIAL DATA OF IMPULSE NC, INC. NO DISCLOSURE, REPRODUCTION OR ANY USE OF ANY PART THEREOF SHALL BE MADE WITHOUT WRITTEN PERMISSION OF IMPULSE NC, INC.

Tip Options

054950-3001

2/0 Type TCL Tip



* Dimensions are for reference only.

Weight

1.75 lbs.

Used Materials

Item #	Part	Material
A	Material	Bronze
B	Set Screws	Steel, Zinc Plated with Dichromate Dip
C	Dampening Screw	Steel, Zinc Plated with Dichromate Dip
D	Nuts, Bolts, & Lockwasher	Steel, Hot Dip Galvanized
E	Installation Instruction	Sticker

Tip Information

Type	Details
Trolley Wire Size	2/0 Round or Grooved
Ultimate Load	>7,473 lbs. based on the breaking strength of 2/0 AWG alloy 80 trolley wire

Photograph of the 2/0 Type TCL Tip

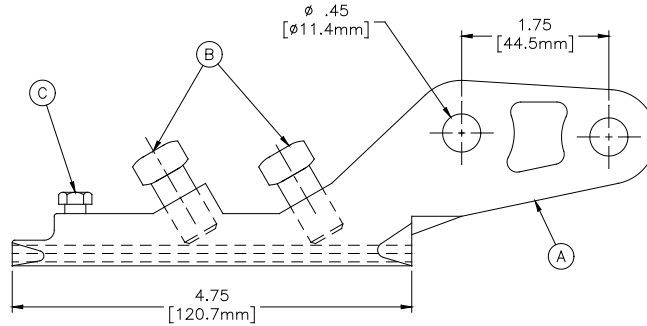


THIS DOCUMENT CONTAINS PROPRIETARY AND CONFIDENTIAL DATA OF IMPULSE NC, INC. NO DISCLOSURE, REPRODUCTION OR ANY USE OF ANY PART THEREOF SHALL BE MADE WITHOUT WRITTEN PERMISSION OF IMPULSE NC, INC.

Tip Options

016831-2000

2/0 Type T Tip



* Dimensions are for reference only.

Weight
0.80 lbs.

Used Materials		
Item #	Part	Material
A	Clamp Body	High Strength Bronze
B	Cup Point Set Screw	Steel, Zinc Plated with Dichromate Dip
C	Dampening Screw	Steel, Zinc Plated with Dichromate Dip

Tip Information	
Type	Details
Trolley Wire Size	2/0 Round or Grooved
Ultimate Load	>7,473 lbs. based on the breaking strength of 2/0 AWG alloy 80 trolley wire

Photograph of the 2/0 Type T Tip

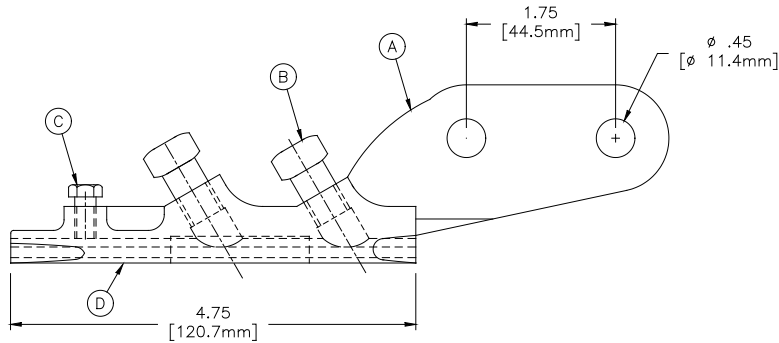


THIS DOCUMENT CONTAINS PROPRIETARY AND CONFIDENTIAL DATA OF IMPULSE NC, INC. NO DISCLOSURE, REPRODUCTION OR ANY USE OF ANY PART THEREOF SHALL BE MADE WITHOUT WRITTEN PERMISSION OF IMPULSE NC, INC.

Tip Options

018210-2000

4/0 Type T Tip



* Dimensions are for reference only.

Weight

0.90 lbs.

Used Materials

Item #	Part	Material
A	Clamp Body	High Strength Bronze
B	Wire Holding Screws	Steel, Zinc Plated with Dichromate Dip
C	Dampening Screw	Steel, Zinc Plated with Dichromate Dip

Tip Information

Type	Details
Trolley Wire Size	4/0 Round or Grooved
Ultimate Load	>10,820 lbs. based on the breaking strength of 4/0 AWG alloy 80 trolley wire

Photograph of the 2/0 Type T Tip

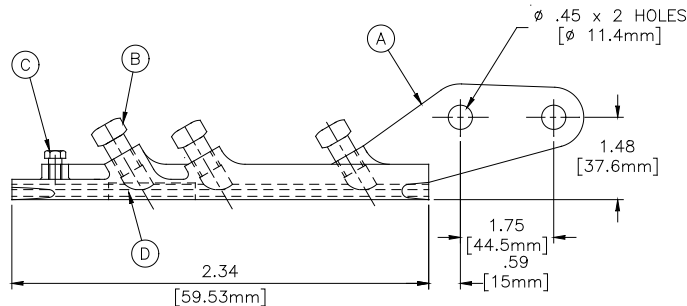


THIS DOCUMENT CONTAINS PROPRIETARY AND CONFIDENTIAL DATA OF IMPULSE NC, INC. NO DISCLOSURE, REPRODUCTION OR ANY USE OF ANY PART THEREOF SHALL BE MADE WITHOUT WRITTEN PERMISSION OF IMPULSE NC, INC.

Tip Options

022433-2000

2/0 Type TL Tip



* Dimensions are for reference only.

Weight

1.22 lbs.

Used Materials

Item #	Part	Material
A	Clamp Body	Bronze
B	Wire Holding Screws	Steel, Zinc Plate with Dichromate Dip
C	Bolts, Nuts, & Washer	Steel, Hot Dip Galvanized
D	Installation Instruction	Sticker

Tip Information

Type	Details
Trolley Wire Size	2/0 Round or Grooved
Ultimate Load	>7,473 lbs. based on the breaking strength of 2/0 AWG alloy 80 trolley wire

Photograph of the 2/0 Type TL Tip

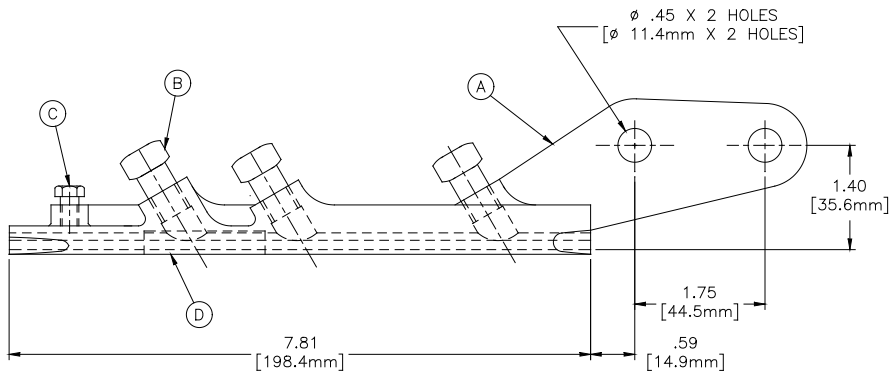


THIS DOCUMENT CONTAINS PROPRIETARY AND CONFIDENTIAL DATA OF IMPULSE NC, INC. NO DISCLOSURE, REPRODUCTION OR ANY USE OF ANY PART THEREOF SHALL BE MADE WITHOUT WRITTEN PERMISSION OF IMPULSE NC, INC.

Tip Options

023720-3003

4/0 Type TL Tip



* Dimensions are for reference only.

Weight

1.22 lbs.

Used Materials

Item #	Part	Material
A	Clamp Body	Bronze
B	Wire Holding Screws	Steel, Zinc Plate with Dichromate Dip
C	Bolts, Nuts, & Washer	Steel, Hot Dip Galvanized
D	Installation Instruction	Sticker

Tip Information

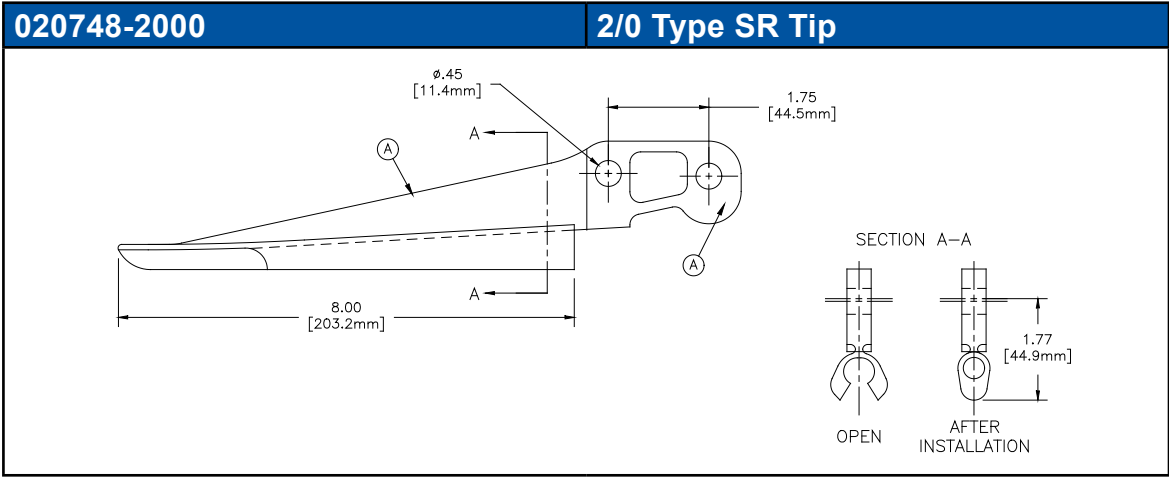
Type	Details
Trolley Wire Size	4/0 Round or Grooved
Ultimate Load	>10,820 lbs. based on the breaking strength of 4/0 AWG alloy 80 trolley wire

Photograph of the 2/0 Type SR Tip



THIS DOCUMENT CONTAINS PROPRIETARY AND CONFIDENTIAL DATA OF IMPULSE NC, INC. NO DISCLOSURE, REPRODUCTION OR ANY USE OF ANY PART THEREOF SHALL BE MADE WITHOUT WRITTEN PERMISSION OF IMPULSE NC, INC.

Tip Options



* Dimensions are for reference only.

Weight
1.30 lbs.

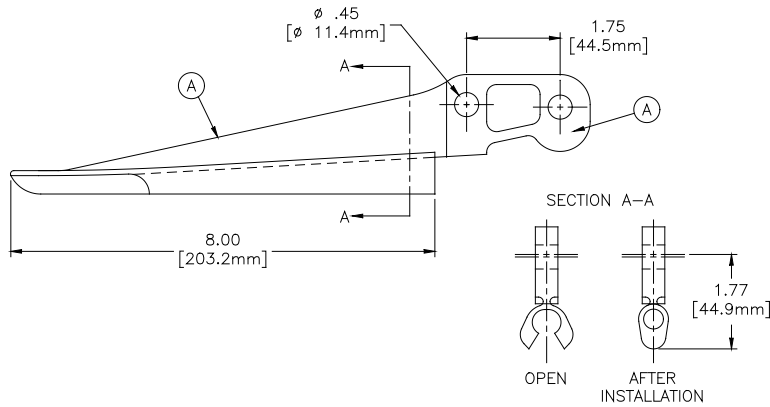
Used Materials		
Item #	Part	Material
A	Material	Bronze

Tip Information	
Type	Details
Trolley Wire Size	2/0 Round or Grooved
Ultimate Load	>7,473 lbs. based on the breaking strength of 2/0 AWG alloy 80 trolley wire



020749-2000

4/0 Type SR Tip



* Dimensions are for reference only.

Weight
1.30 lbs.

Used Materials		
Item #	Part	Material
A	Material	Bronze

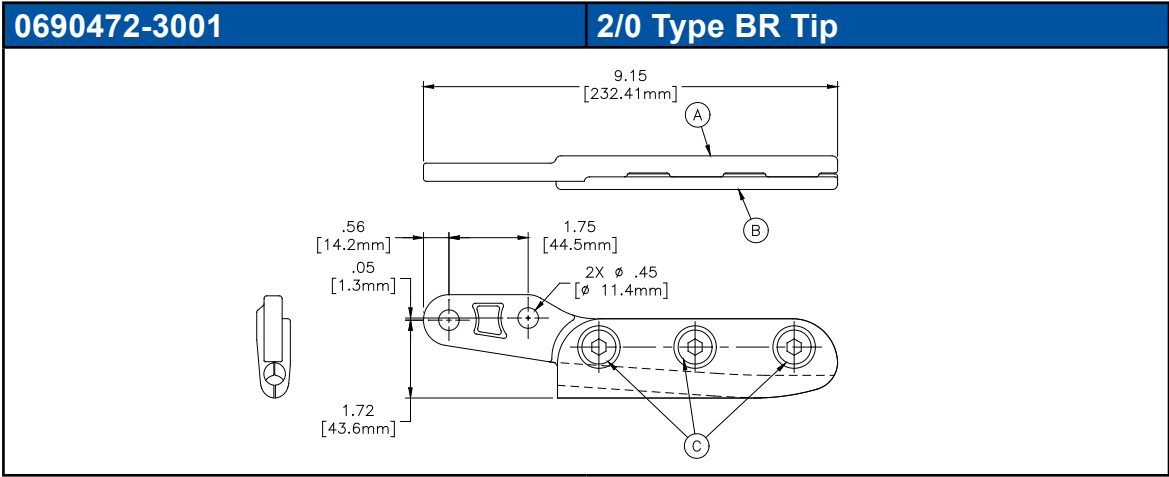
Tip Information	
Type	Details
Trolley Wire Size	4/0 Round or Grooved
Ultimate Load	>10,820 lbs. based on the breaking strength of 4/0 AWG alloy 80 trolley wire

Photograph of the 4/0 Type SR Tip



THIS DOCUMENT CONTAINS PROPRIETARY AND CONFIDENTIAL DATA OF IMPULSE NC, INC. NO DISCLOSURE, REPRODUCTION OR ANY USE OF ANY PART THEREOF SHALL BE MADE WITHOUT WRITTEN PERMISSION OF IMPULSE NC, INC.

Tip Options



* Dimensions are for reference only.

Weight
1.40 lbs.

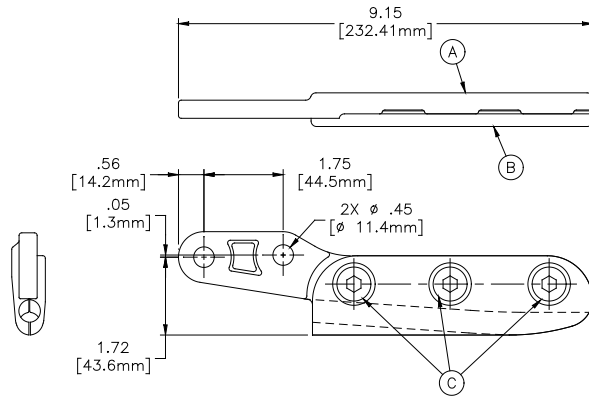
Used Materials		
Item #	Part	Material
A	Clamp Body	Bronze
B	Clamp	Bronze
C	Hollow Screw	Bronze

Tip Information	
Type	Details
Trolley Wire Size	2/0 Round or Grooved
Ultimate Load	>7,473 lbs. based on the breaking strength of 2/0 AWG alloy 80 trolley wire



0690472-3002

4/0 Type BR Tip



* Dimensions are for reference only.

Weight

1.40 lbs.

Used Materials

Item #	Part	Material
A	Clamp Body	Bronze
B	Clamp	Bronze
C	Hollow Screw	Bronze

Tip Information

Type	Details
Trolley Wire Size	4/0 Round or Grooved
Ultimate Load	>10,820 lbs. based on the breaking strength of 4/0 AWG alloy 80 trolley wire

Photograph of the 4/0 Type BR Tip



THIS DOCUMENT CONTAINS PROPRIETARY AND CONFIDENTIAL DATA OF IMPULSE NC, INC. NO DISCLOSURE, REPRODUCTION OR ANY USE OF ANY PART THEREOF SHALL BE MADE WITHOUT WRITTEN PERMISSION OF IMPULSE NC, INC.

Tip Options