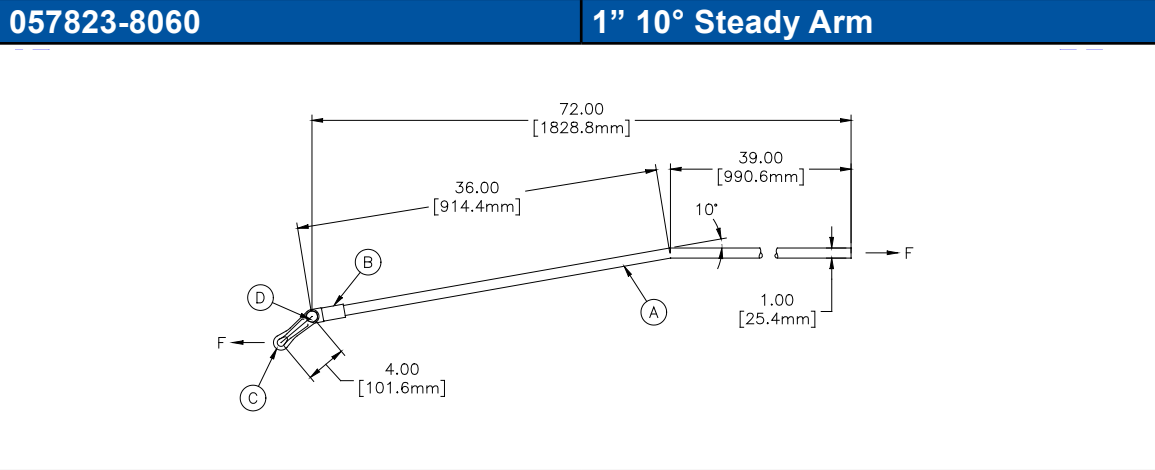


* Dimensions are for reference only.

Weight
6.00 lb [2.72 kg]

Materials		
Item #	Part	Material
A	Arm, 1.05" OD	Steel Tubing, Hot Dip Galvanized
B	Rivet, 5/8" X 2 1/8"	Steel, Hot Dip Galvanized
C	Cotter Pin	Stainless Steel

Steady Arm Information	
Type	Details
Ultimate Load (F)	1,200 lbf [5.34 kN]

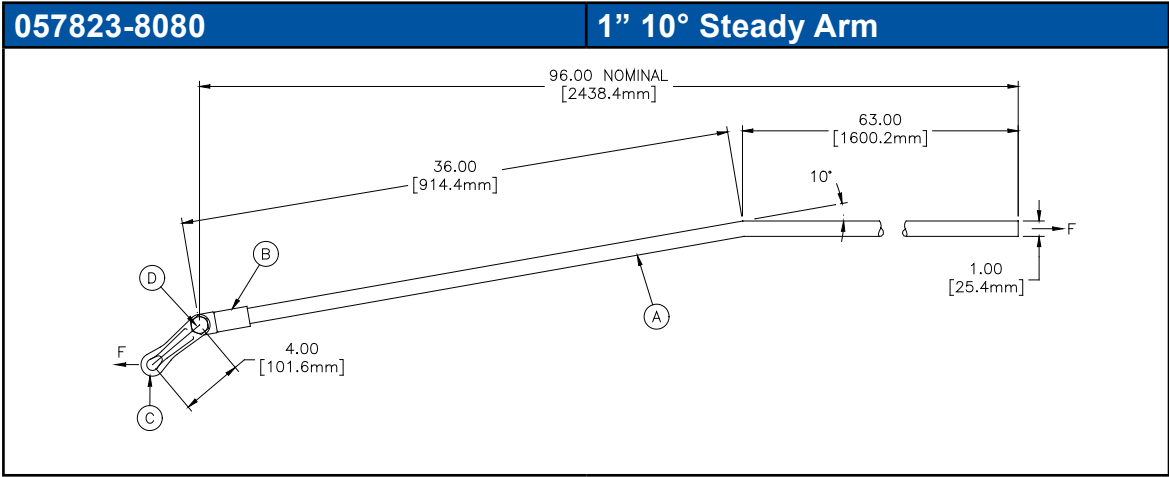


* Dimensions are for reference only.

Weight
12.00 lb [5.44 kg]

Materials		
Item #	Part	Material
A	Tube, 1.00" OD	Steel, Hot Dip Galvanized
B	End Fitting	Ductile Iron, Hot Dip Galvanized
C	Adjustable Arm	Ductile Iron, Hot Dip Galvanized
D	Nut, Bolt, and Washer	Steel, Hot Dip Galvanized

Steady Arm Information	
Type	Details
Ultimate Load (F)	500 lbf [2.22 kN]

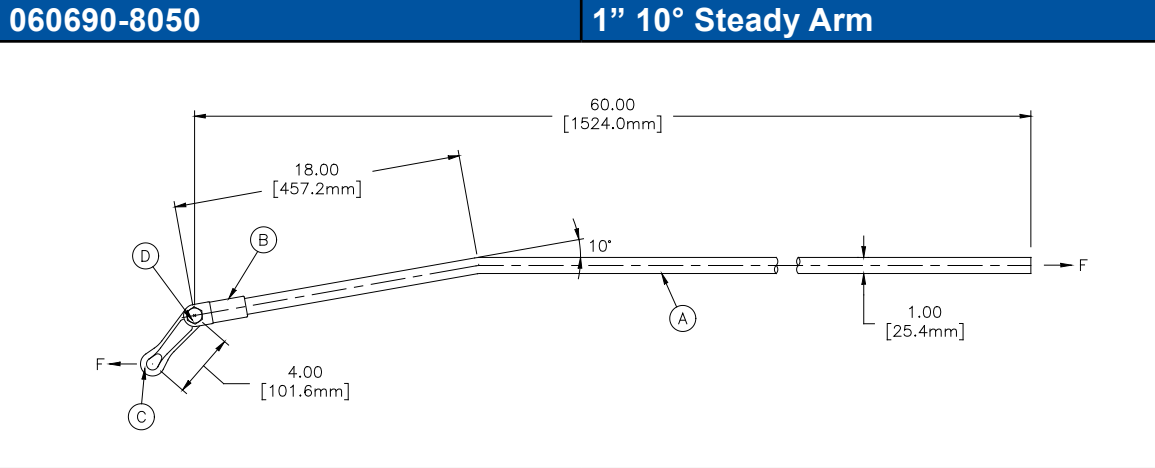


* Dimensions are for reference only.

Weight
16.00 lb [7.26 kg]

Materials		
Item #	Part	Material
A	Tube, 1.00" OD	Steel, Hot Dip Galvanized
B	End Fitting	Ductile Iron, Hot Dip Galvanized
C	Adjustable Arm	Ductile Iron, Hot Dip Galvanized
D	Nut, Bolt, and Washer	Steel, Hot Dip Galvanized

Steady Arm Information	
Type	Details
Ultimate Load (F)	500 lbf [2.22 kN]

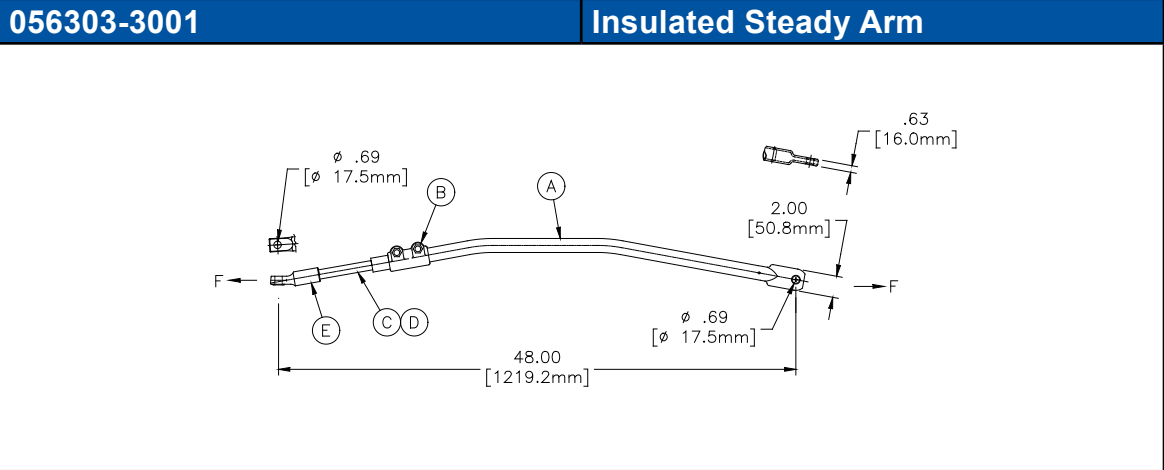


* Dimensions are for reference only.

Weight
10.00 lb [4.54 kg]

Materials		
Item #	Part	Material
A	Tube, 1.00" OD	Steel, Hot Dip Galvanized
B	End Fitting	Ductile Iron, Hot Dip Galvanized
C	Adjustable Arm	Ductile Iron, Hot Dip Galvanized
D	Nut, Bolt, and Washer	Steel, Hot Dip Galvanized

Steady Arm Information	
Type	Details
Ultimate Tensile Load (F)	5,000 lbf [22.24 kN]
Ultimate Compressive Load (-F)	750 lbf [3.34 kN]

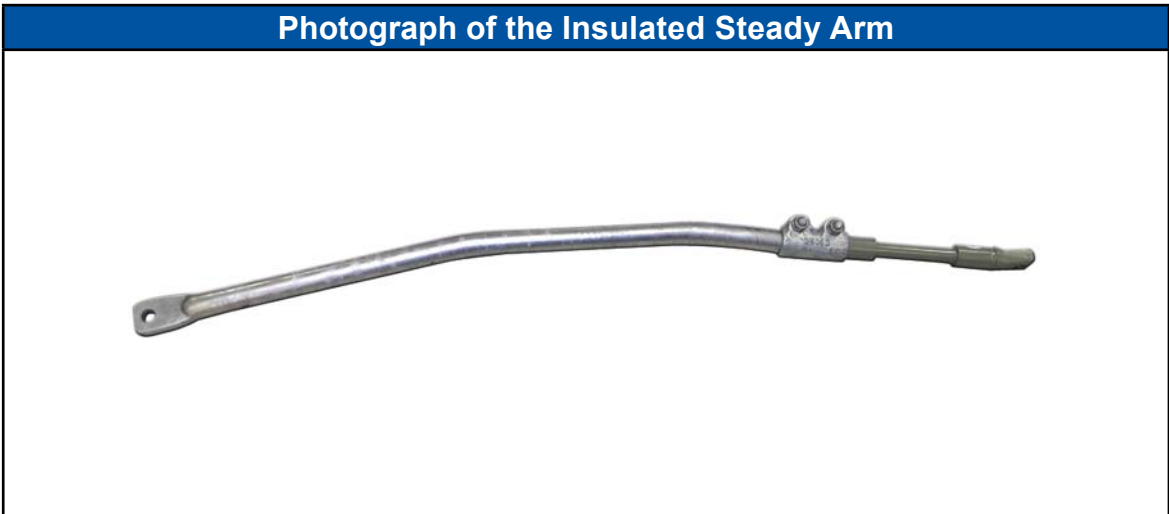


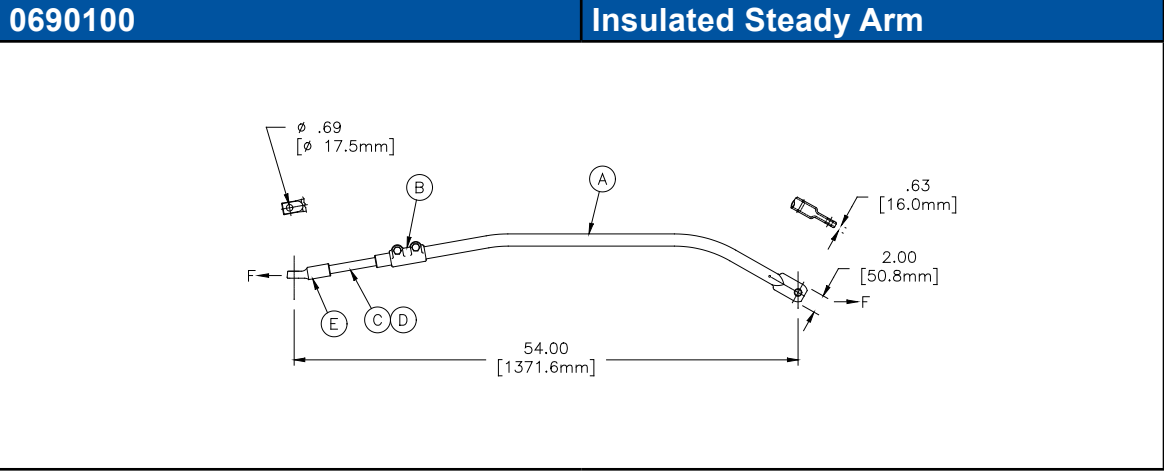
* Dimensions are for reference only.

Weight
7.00 lb [3.18 kg]

Materials		
Item #	Part	Material
A	Arm, 1.00" I.P.S.	Steel Pipe, Hot Dip Galvanized
B	Coupling	Ductile Iron, Hot Dip Galvanized
C	Insulator, Ø7/8"	Epoxy Fiberglass Rod
D	Protective Coating	Gray Alkyd Based Enamel Paint
E	End Fitting	Ductile Iron, Hot Dip Galvanized

Steady Arm Information	
Type	Details
Ultimate Load (F)	2,500 lbf [11.12 kN]



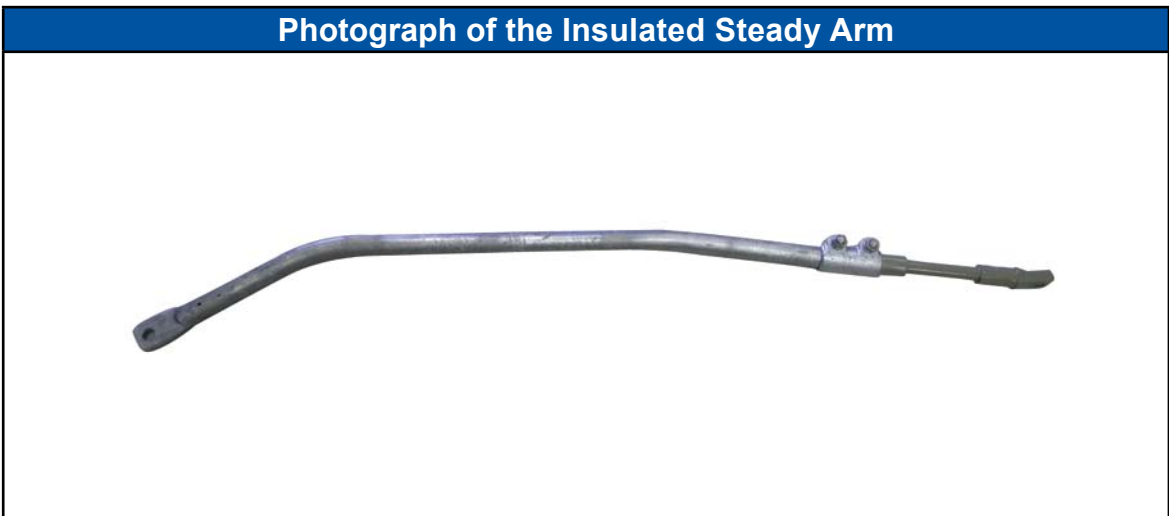


* Dimensions are for reference only.

Weight
11.04 lb [5.01 kg]

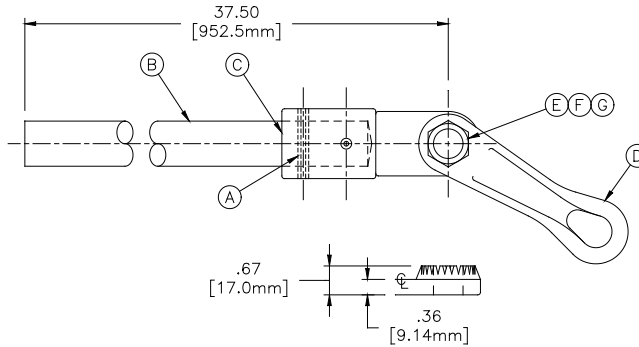
Materials		
Item #	Part	Material
A	Arm, 1.00" I.P.S.	Steel Pipe, Hot Dip Galvanized
B	Coupling	Ductile Iron, Hot Dip Galvanized
C	Insulator, Ø7/8"	Epoxy Fiberglass Rod
D	Protective Coating	Gray Alkyd Based Enamel Paint
E	End Fitting	Ductile Iron, Hot Dip Galvanized

Steady Arm Information	
Type	Details
Ultimate Load (F)	2,500 lbf [11.12 kN]



060471-3001

Uninsulated Steady Arm



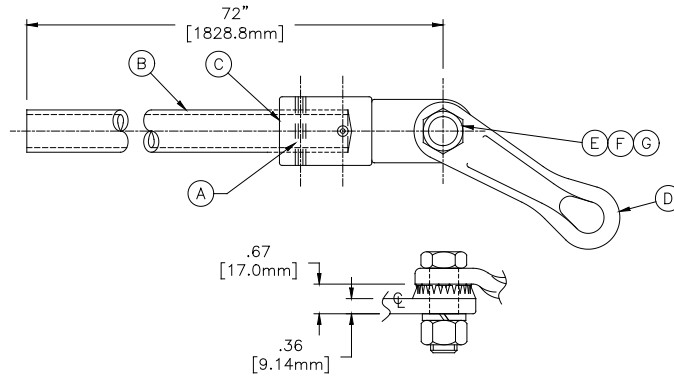
* Dimensions are for reference only.

Weight
4.50 lb [2.04 kg]

Item #	Materials	
	Part	Material
A	Roll Pin	Stainless Steel
B	Tube, 1.00" OD	Ductile Iron, Hot Dip Galvanized
C	End Fitting	Ductile Iron, Hot Dip Galvanized
D	Adjustable Arm	Ductile Iron, Hot Dip Galvanized
E	Hex HD Bolt	Steel, Hot Dip Galvanized
F	Nut	Steel, Hot Dip Galvanized
G	Lockwasher	Steel, Hot Dip Galvanized

060471-8060

Uninsulated Steady Arm



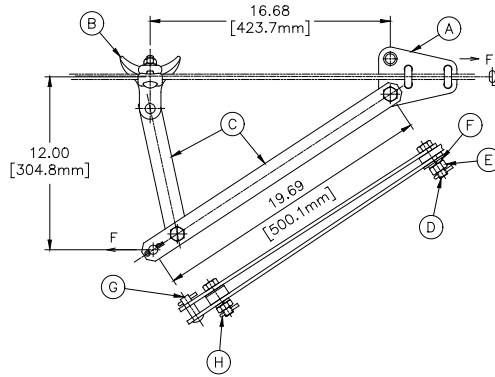
* Dimensions are for reference only.

Weight
4.50 lb [2.04 kg]

Materials		
Item #	Part	Material
A	Roll Pin	Stainless Steel
B	Tube, 1.00" OD	Steel, Hot Dip Galvanized
C	End Fitting	Ductile Iron, Hot Dip Galvanized
D	Adjustable Arm	Ductile Iron, Hot Dip Galvanized
E	Hex HD Bolt	Steel, Hot Dip Galvanized
F	Nut	Steel, Hot Dip Galvanized
G	Lockwasher	Steel, Hot Dip Galvanized

059058-3005

Support Steady Arm



* Dimensions are for reference only.

Weight

12.60 lb [5.72 kg]

		Materials
Item #	Part	Material
A	Strain Clamp	Steel Plate and Hardware Hot Dip Galvanized
B	Angle Clamp	Ductile Iron, Hot Dip Galvanized with Hot Dip Galvanized Steel Hardware
C	Straps	Steel, Hot Dip Galvanized
D	Bolts	Steel, Hot Dip Galvanized
E	Nut	Steel, Hot Dip Galvanized
F	Lockwasher	Steel, Hot Dip Galvanized
G	Rivet, 5/8"	Steel, Hot Dip Galvanized
H	Cotter Pins	Stainless Steel

Steady Arm Information

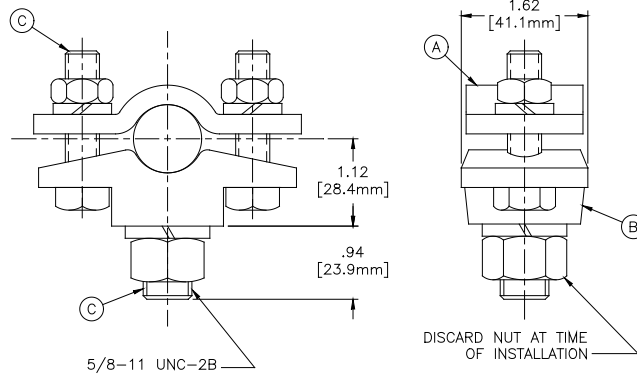
Type	Details
Ultimate Load (F)	8,000 lbf [35.59 kN]

Photograph of the Support Steady Arm



054962-3003

Trolley Wire Support Clamp

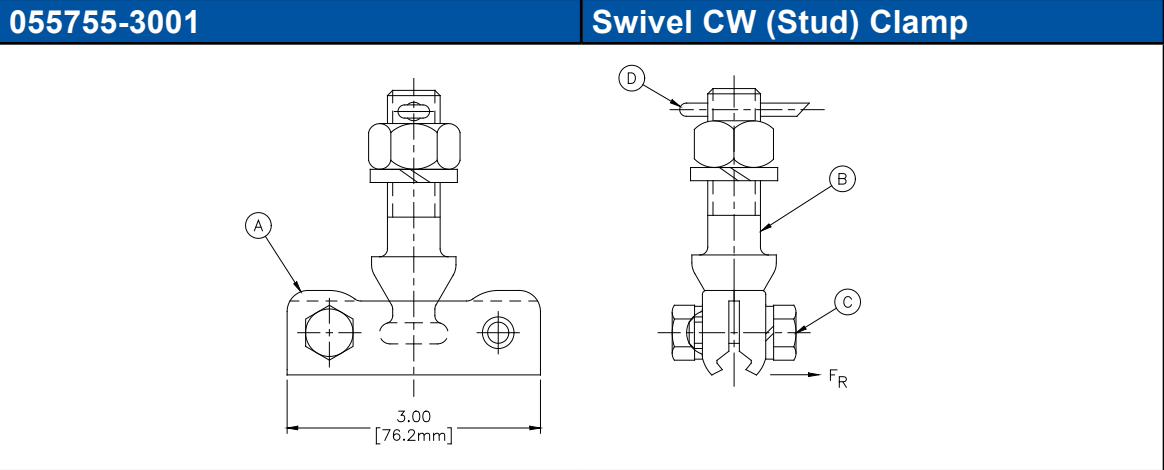


* Dimensions are for reference only.

Weight
1.00 lb [0.45 kg]

Materials		
Item #	Part	Material
A	Top Clamp	Steel, Hot Dip Galvanized
B	Bottom Clamp	Ductile Iron, Hot Dip Galvanized
C	Bolts, Nuts, & Lockwashers	Steel, Hot Dip Galvanized

Clamp Information	
Type	Details
Rod Clamping Range	Ø.88" - Ø1.00" [Ø22.4 mm - Ø25.4 mm]

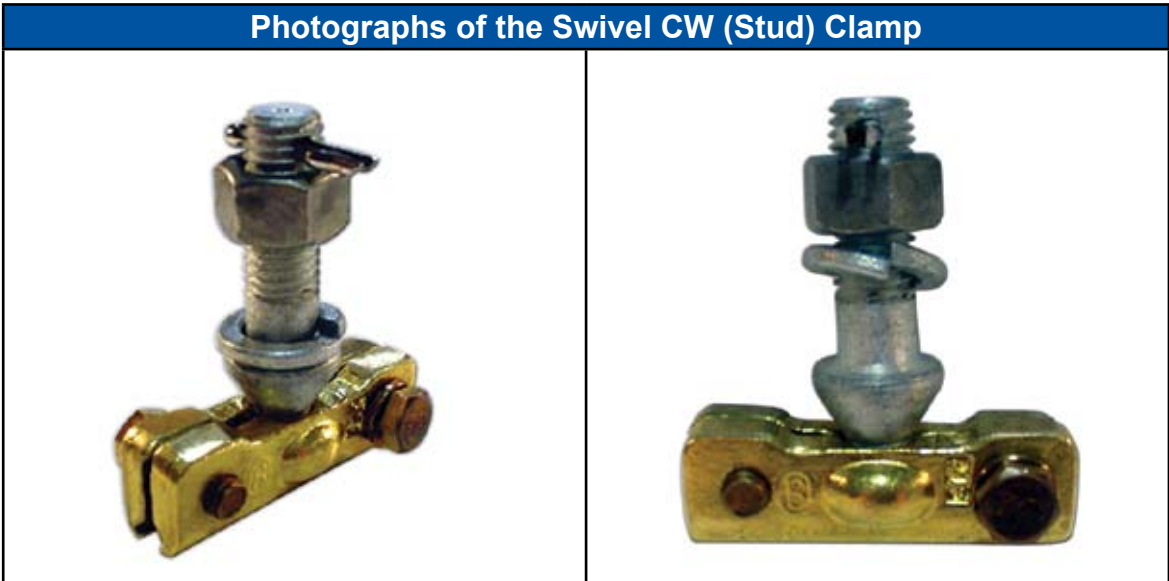


* Dimensions are for reference only.

Weight
2.06 lb [0.93 kg]

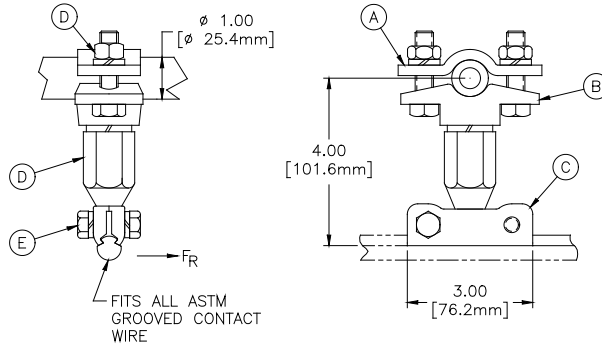
Materials		
Item #	Part	Material
A	Grooved Wire Clamp	Bronze
B	Swivel, Stud, Nut, & Lockwasher, 5/8"	Steel, Hot Dip Galvanized
C	Fasteners	Bronze
D	Cotter Pin	Stainless Steel

Clamp Information	
Type	Details
Ultimate Radial Load (F_R)	3,000 lbf [13.34 kN]



057219-3001

4" Swivel CW Clamp



* Dimensions are for reference only.

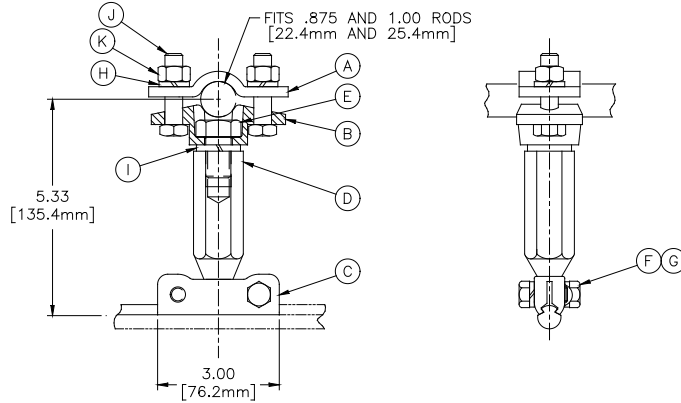
Weight
2.06 lbs [0.93 kg]

Materials		
Item #	Part	Material
A	Top Clamp	Steel, Hot Dip Galvanized
B	Bottom Clamp	Ductile Iron, Hot Dip Galvanized
C	Grooved Wire Clamp	Bronze
D	Swivel Stud	Steel, Hot Dip Galvanized
E	Fasteners	Bronze

Clamp Information	
Type	Details
Ultimate Radial Load (FR)	1,200 lbf [5.34 kN]

057219-3011

Insulated CW Swivel Clamp



* Dimensions are for reference only.

Weight
2.50 lb [1.13 kg]

Item #	Materials	
	Part	Material
A	Top Clamp	Steel, Hot Dip Galvanized
B	Bottom Clamp	Ductile Iron, Hot Dip Galvanized
C	Grooved Wire Clamp	Bronze
D	Swivel Stud	Steel, Hot Dip Galvanized
E	Bolt	Steel, Hot Dip Galvanized
F	Bolt, 3/8"	Bronze
G	Lockwasher	Bronze
H	Lockwasher	Bronze
I	Lockwasher	Bronze
J	Bolt, 7/16"	Steel, Hot Dip Galvanized
K	Hex Nut	Steel, Hot Dip Galvanized